

150mm DETACHABLE PLASTIC TEST CUBE MOULD

(Three-part detachable) 150mm PLASTIC CUBE MOULD

The mould is compliant with specifications laid out in EN 12390-1 (Testing hardened concrete. Shape, dimensions and other requirements for test pieces and forms). It is made with Acrylonitrile butadiene styrene (ABS) plastic.

It consists of two identical halves and a base that are easy to assemble. The elements are coupled together by self-aligning nuts & bolts, which ensure an even, tight fit. It contains 8 sets of nuts and bolts in total.



KEY FEATURES

Benefits

- Cuts down assembling and disassembling time;
- Multiple reuse;
- Lightweight and easy to transport;
- Allows for quick and easy striking of mould (without risk of damage to test cube)

ABS material's properties

- Impact Resistance
- Structural Strength and Stiffness
- Chemical Resistance
- Excellent High and Low Temperature Performance
- Great Electrical Insulation Properties
- Easy to Paint and Glue

Specifications

Model No	CMP 10BS
Color	Black
Dimension (mm)	150 x 150 x 150
Weight (kg)	0.9 kg
Input	9-28V DC

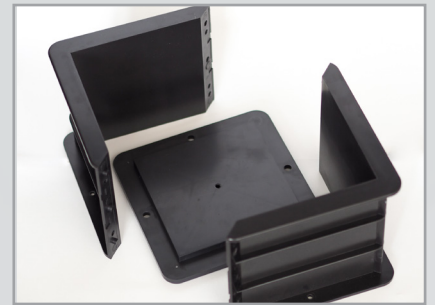
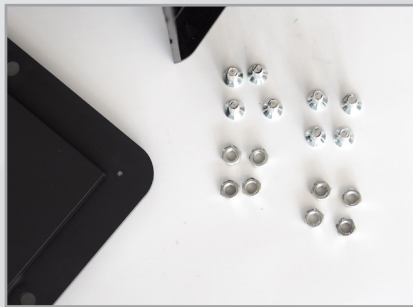
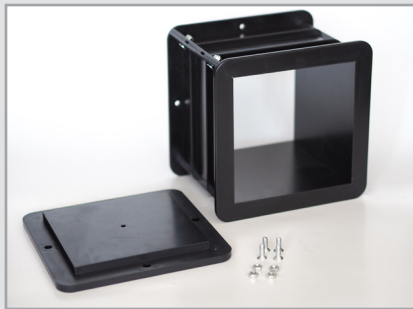


INTEC MARKETING SERVICES SDN BHD
LOT 8678, PENDING COMMERCIAL CENTRE
JALAN PENDING, KUCHING, 93450
SARAWAK, MALAYSIA

Phone: +6082 344 596
Email: sales@intec.com.my
Website: www.intec.com.my



INTRODUCING OUR NEW PRODUCT: 150MM DETACHABLE PLASTIC CUBE MOULD



KONEG
RM 33.00 /piece
Discounts for bulk order

COMPARISON OF OUR 150MM CUBE MOULDS



CMP 10BS
Detachable Plastic Cube Mould
RM 33.00

- + Cheap & Anti-Theft
- + Durable
- + No compressor is needed for sample removal (but applicable still)
- + Light

Discounts for bulk



CMP 12G
Non-Detachable Plastic Cube Mould
RM 37.00 (Green)

- + Cheap & Anti-Theft
- + Durable
- + Quick removal with compressor
- + Light
- Requires additional compressor for sample removal



CMP 102
Cast Iron Cube Mould
RM 165.00

- + No compressor needed for sample removal
- + Durable
- Heavy
- Prone to theft